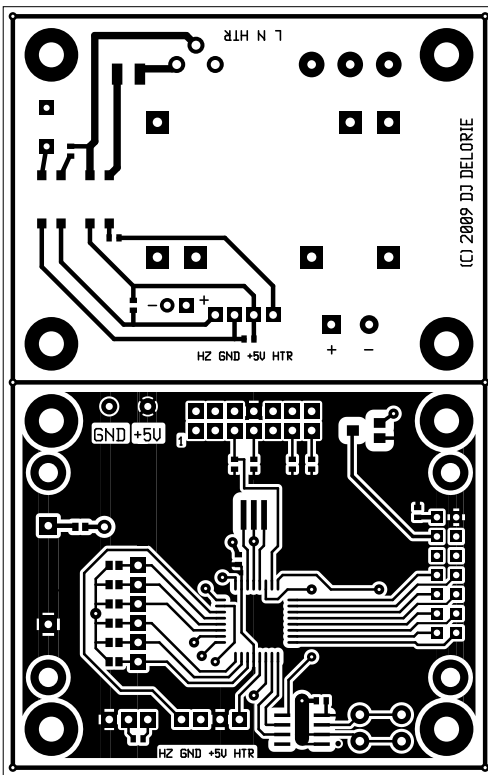
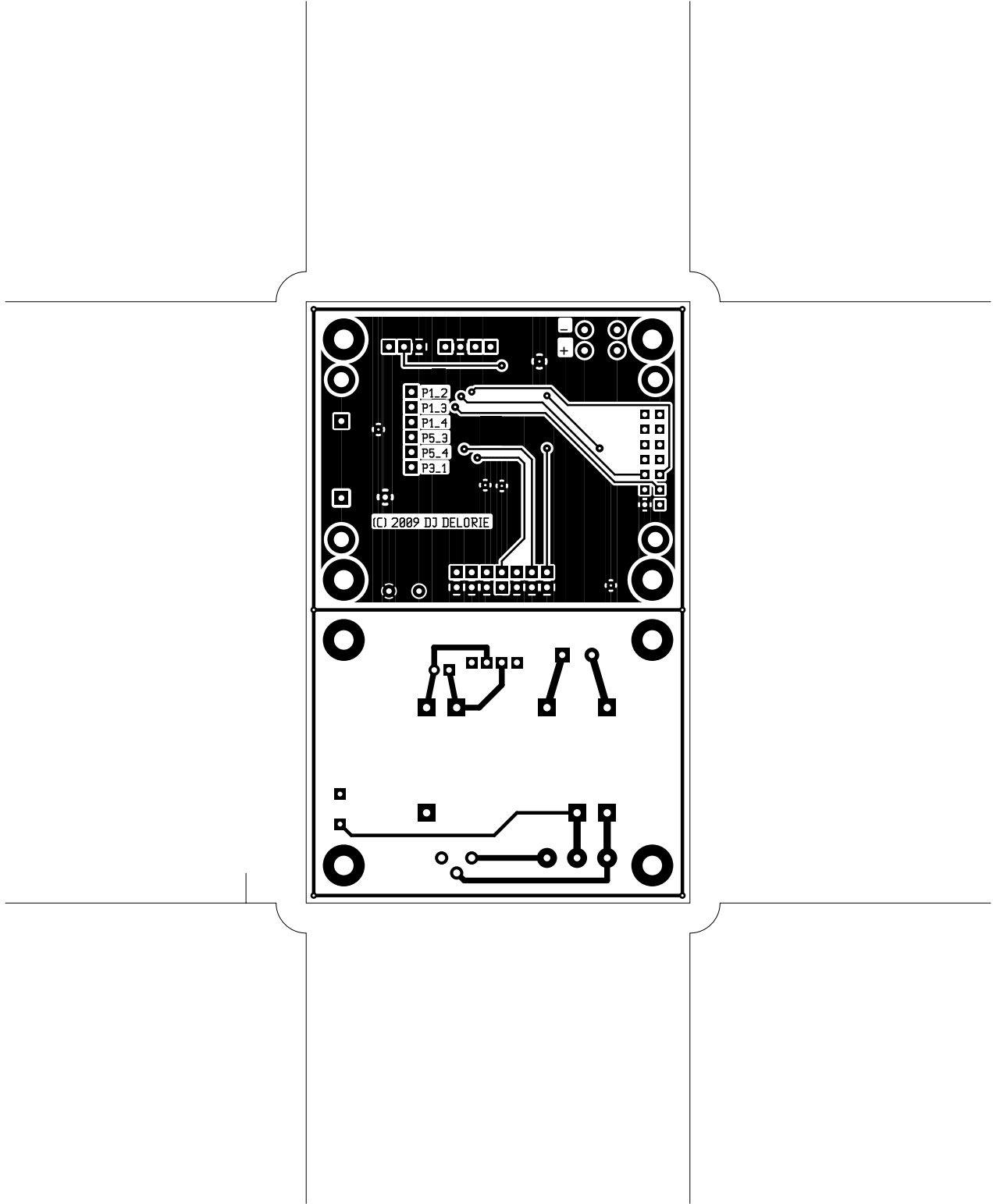
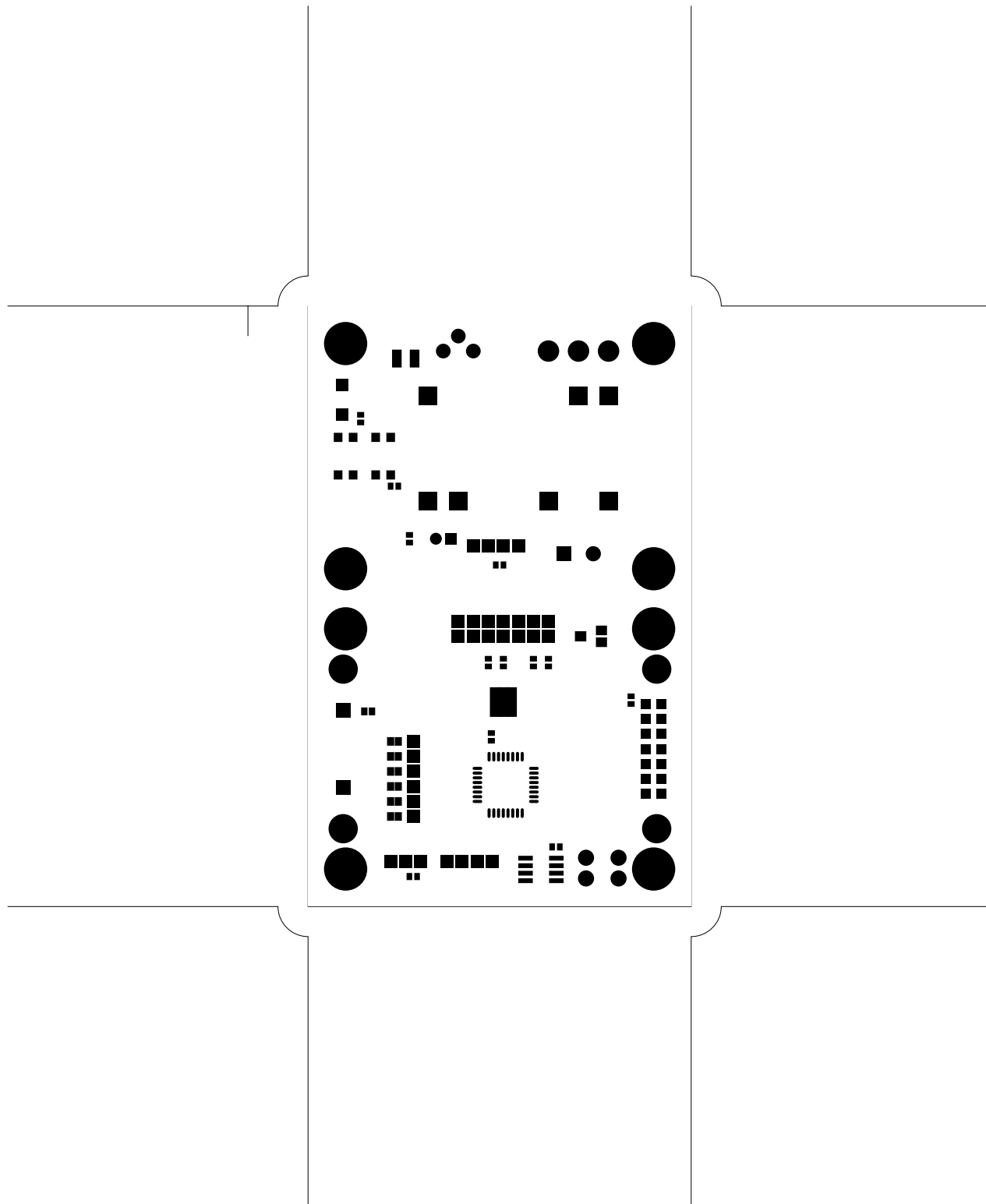


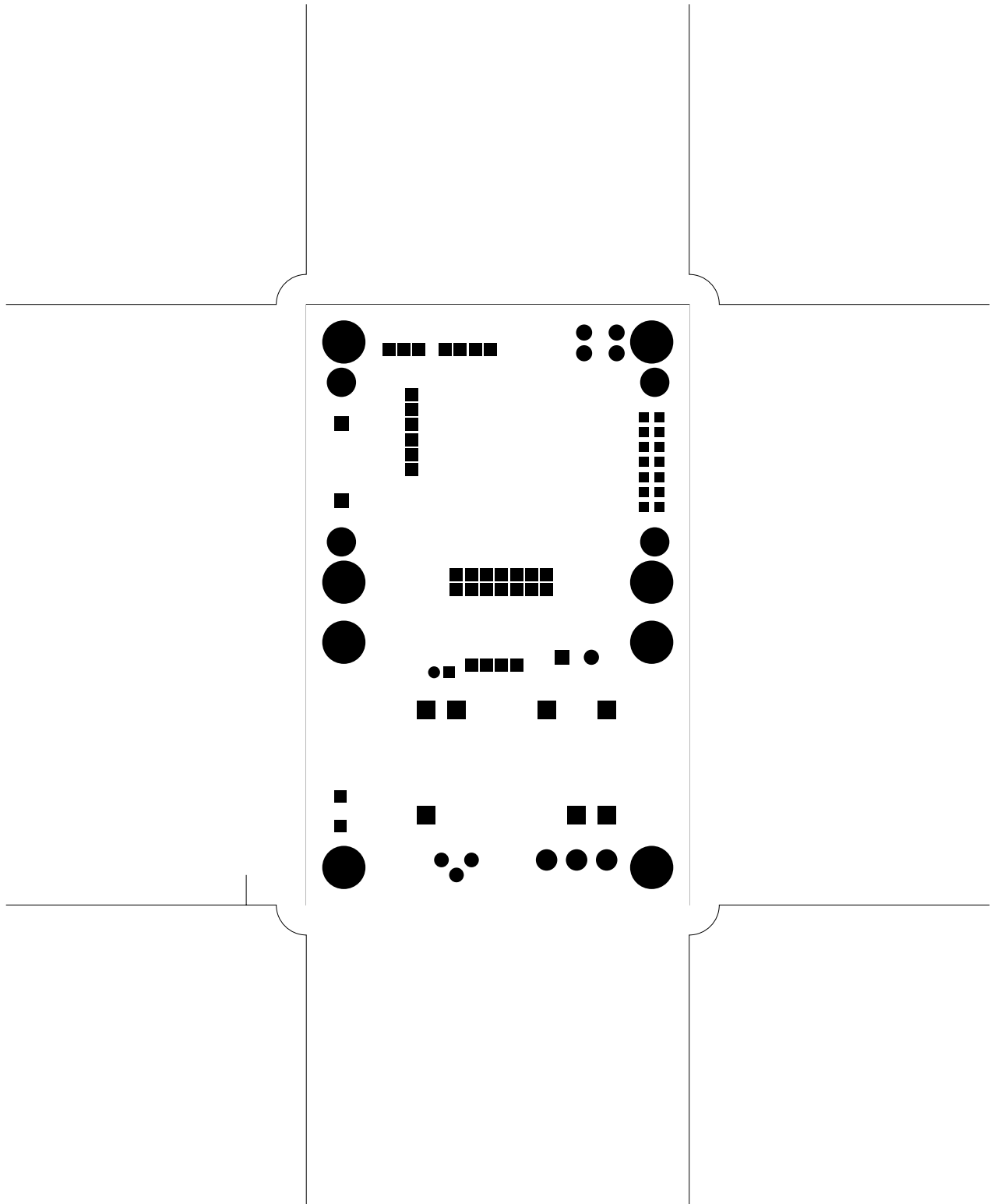
2. component
3. solder
4. componentmask
5. soldermask
6. plated-drill
7. topsilk
8. bottomsilk
9. toppaste
10. topassembly
11. bottomassembly
12. fab

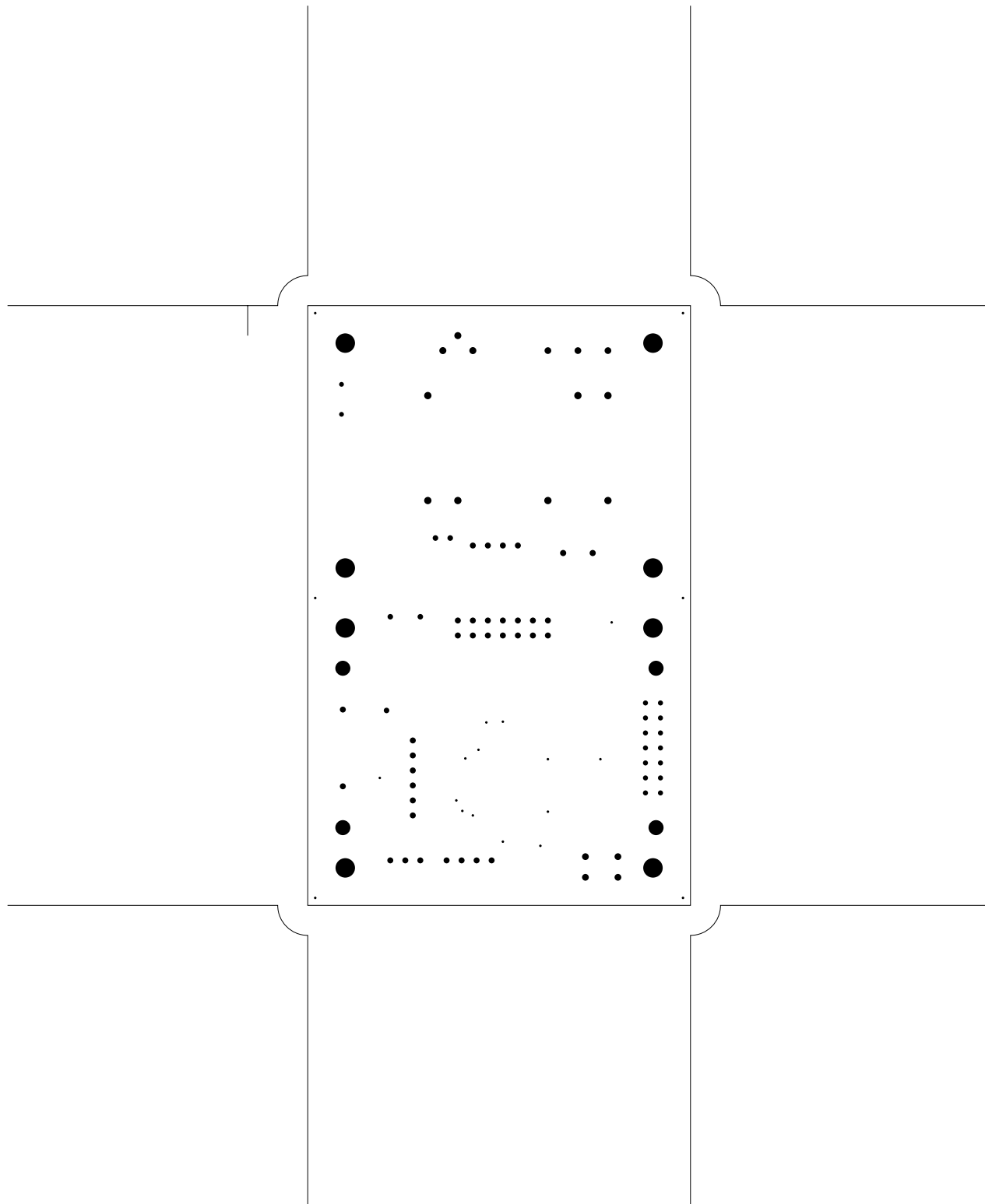


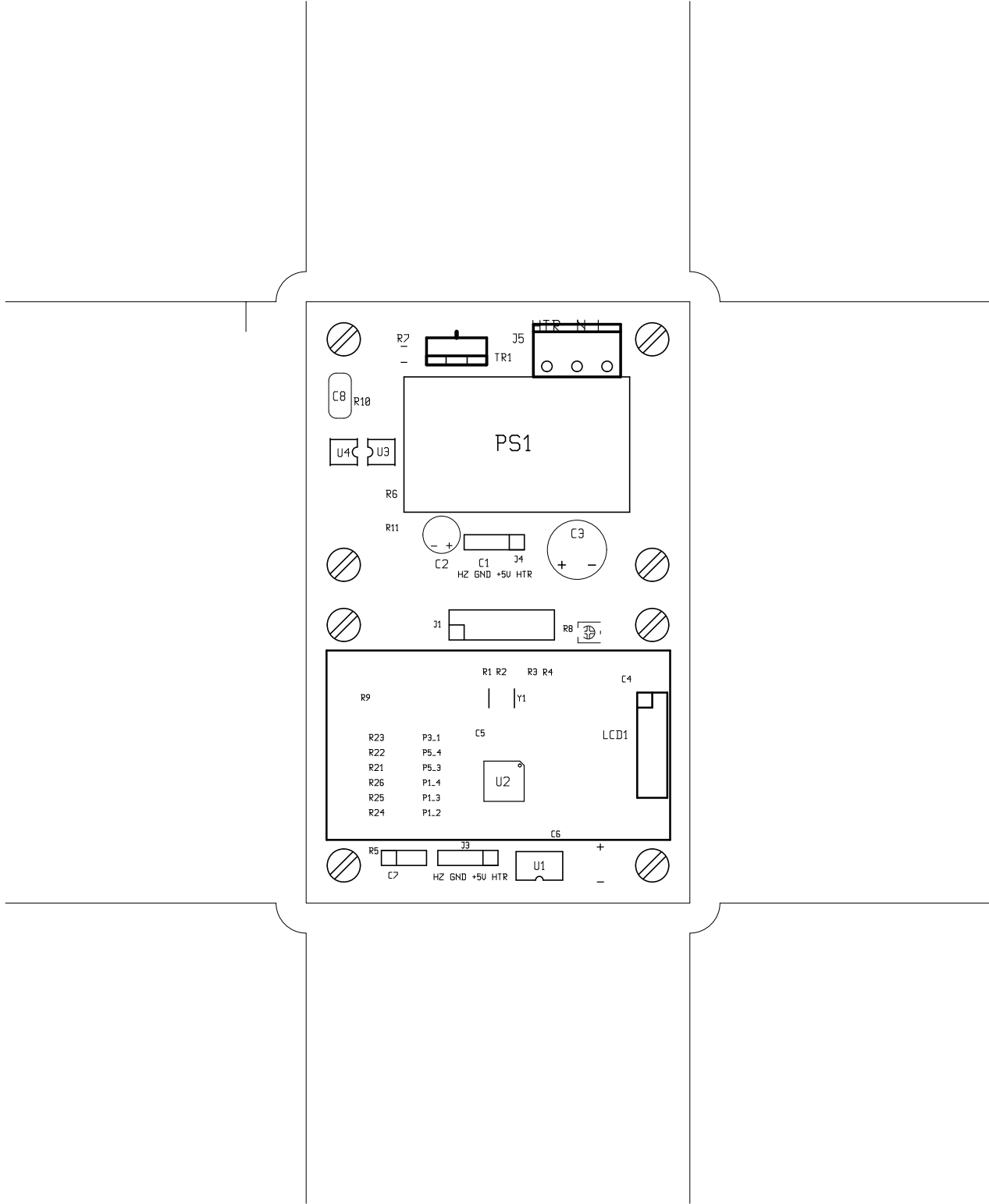


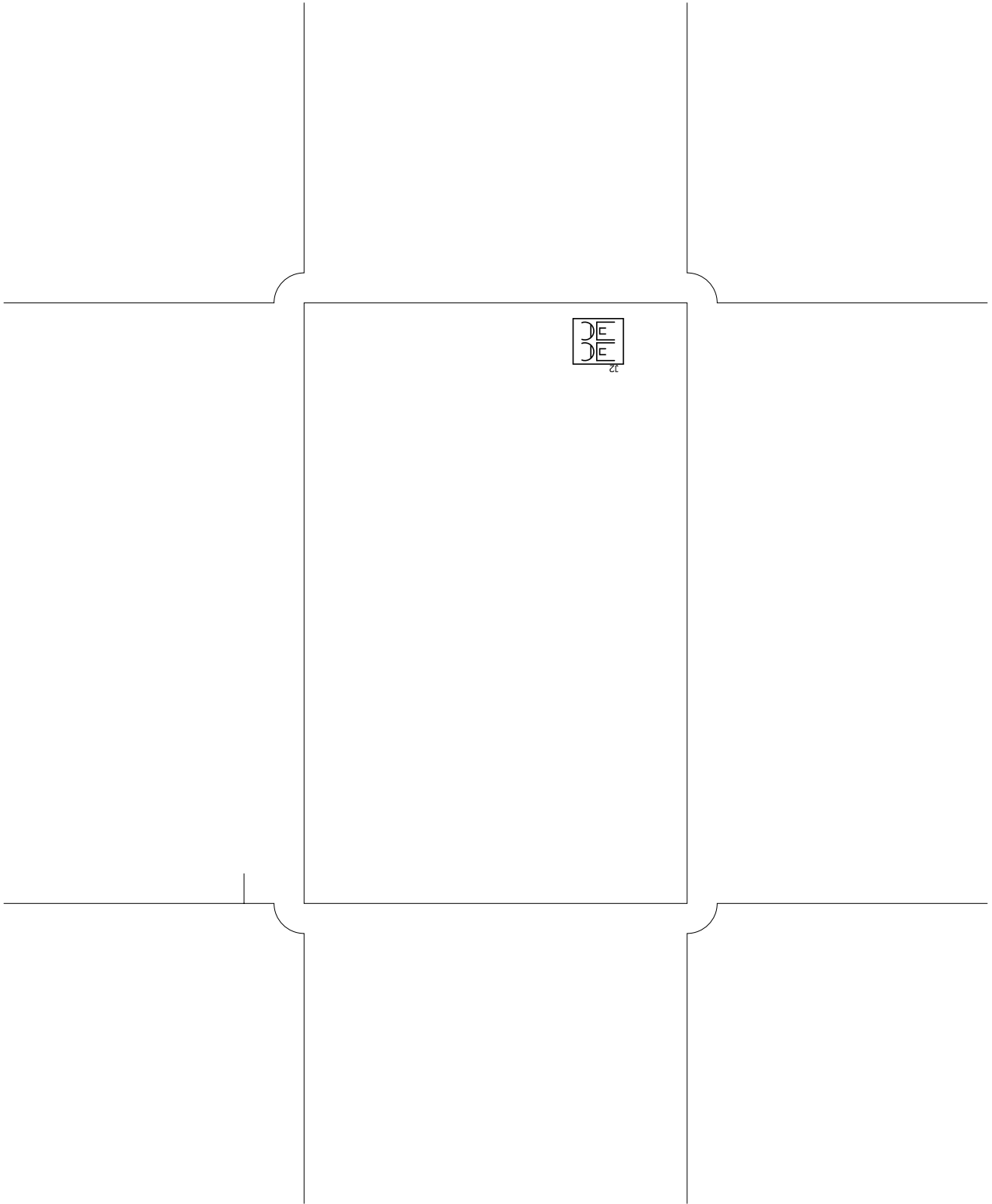
back (mirrored), scale = 1:1.000  
laminator.pcb



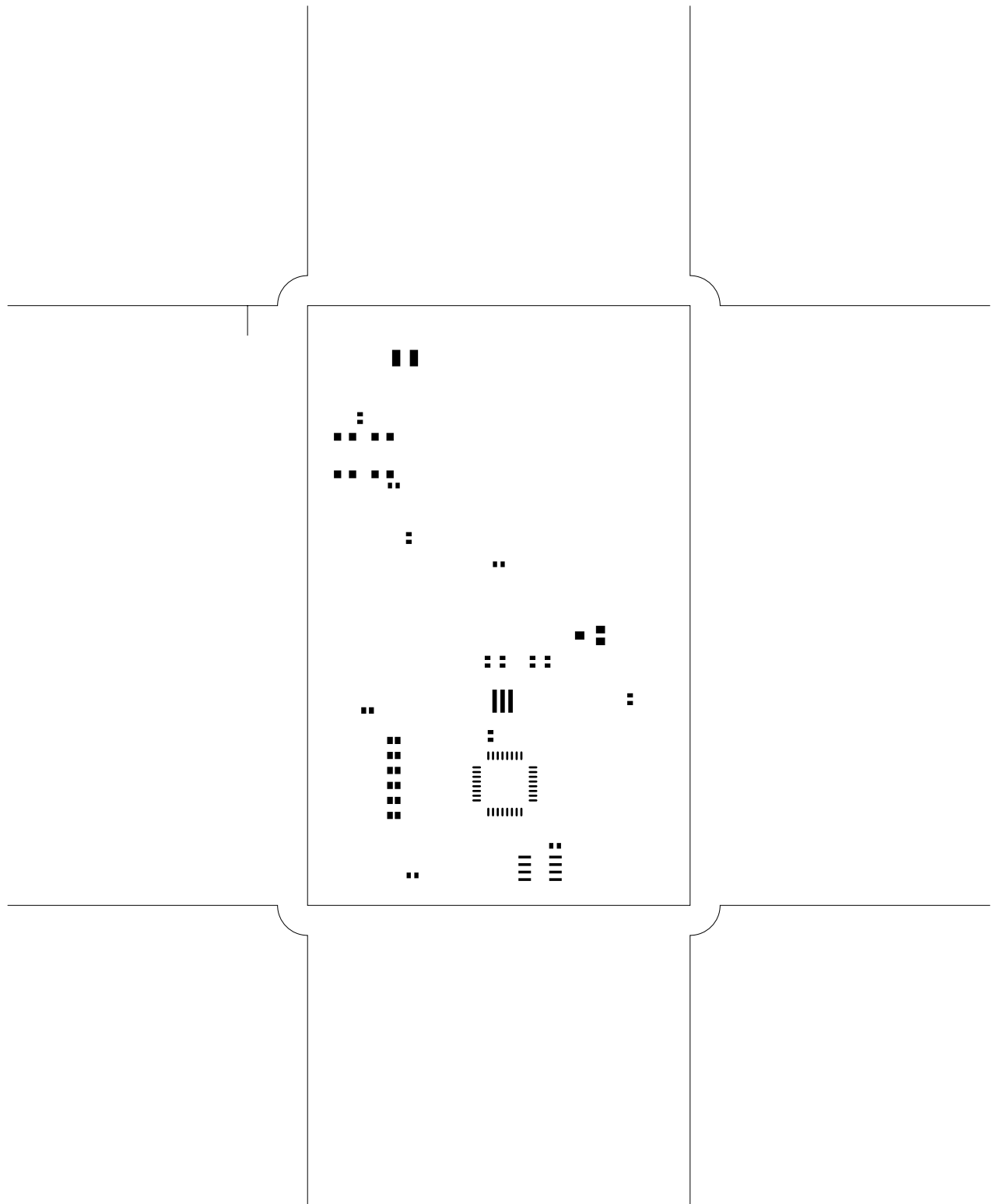


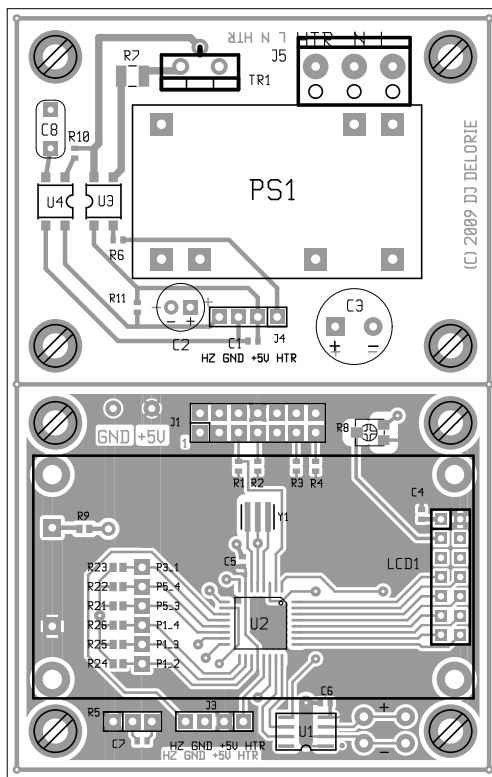


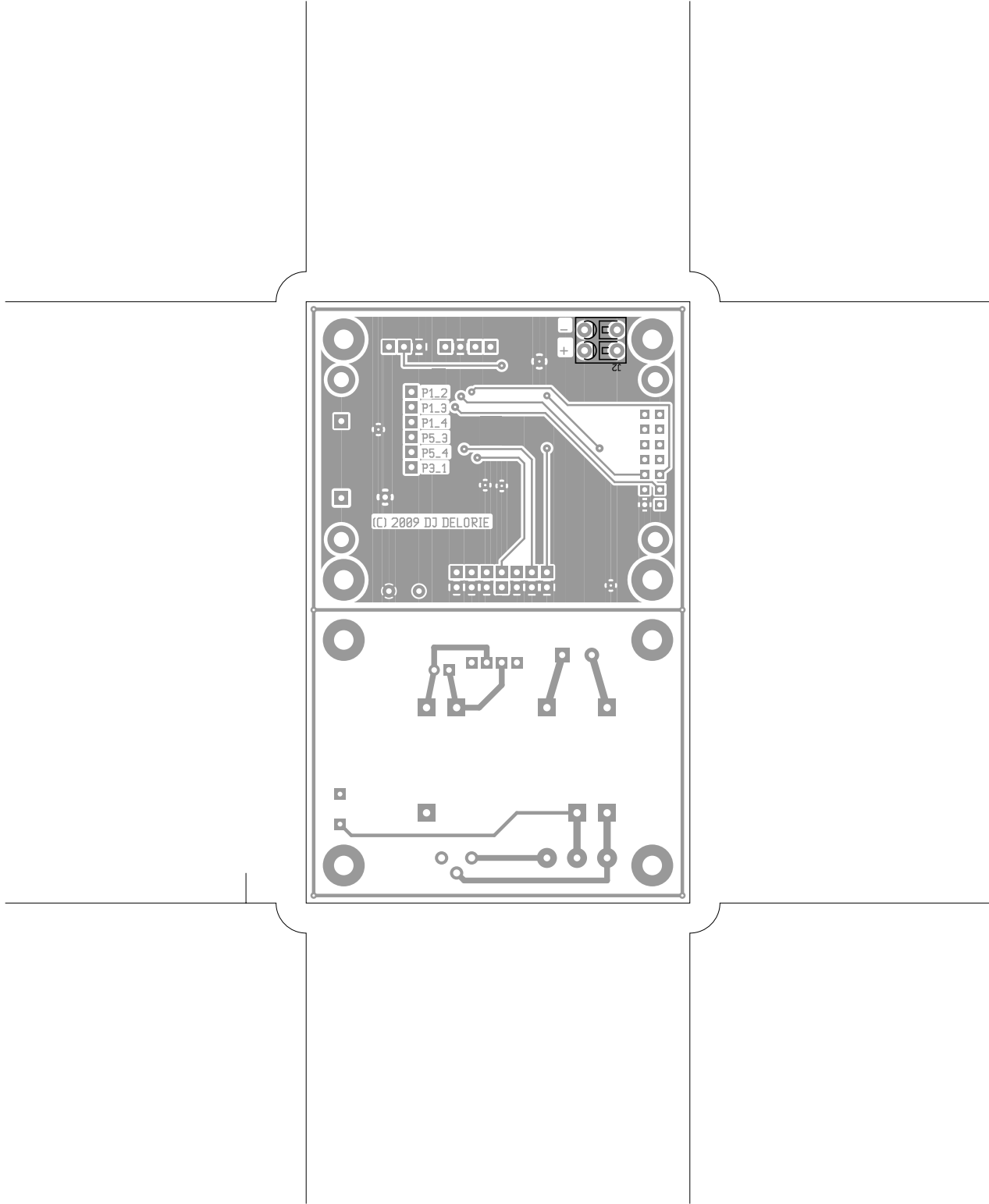












There are 11 different drill sizes used in this layout, 105 holes total

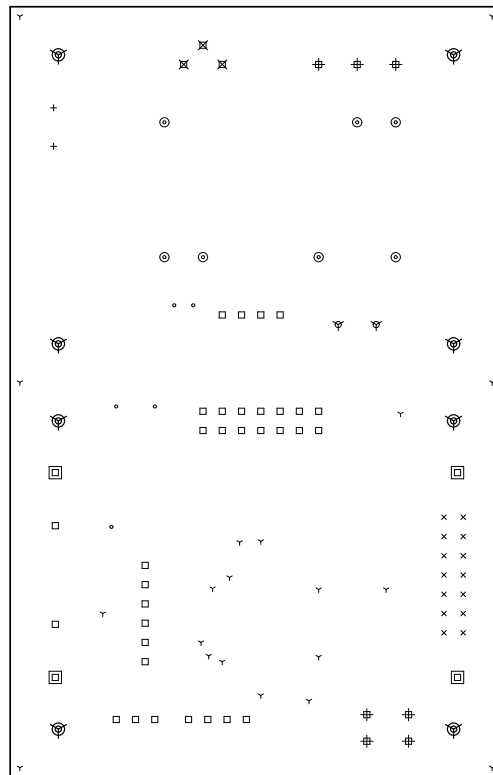
Symbol	Diam. (Inch)	Count	Plated?
Y	0.015	20	YES
+	0.030	2	YES
x	0.032	14	YES
o	0.035	5	YES
□	0.038	33	YES
▽	0.039	2	YES
#	0.043	2	YES
×	0.045	3	YES
⊙	0.047	2	YES
⊠	0.098	4	YES
⊕	0.128	8	YES

Title: (unknown) - Fabrication Drawing

Author: DJ Delorie

Date: Thu May 21 12:44:22 2009 UTC

Maximum Dimensions: 2550 mils wide, 4000 mils high



Board outline is the centerline of this 10 mil rectangle - 0,0 to 2550,4000 mils